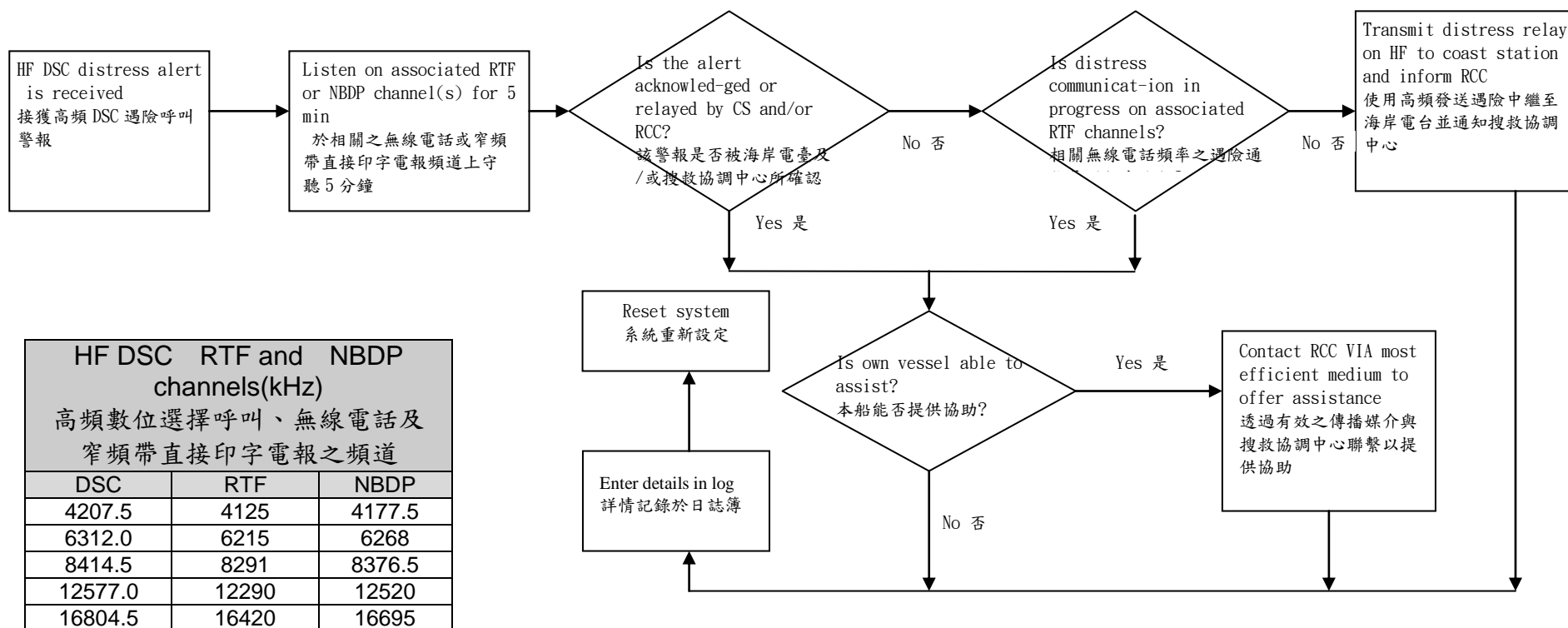


附件 二 船舶接獲高頻數位選擇呼叫遇險警報作業流程

Actions by Ships Upon Reception of HF DSC Distress Alert



Remarks 備註：

1. If it is clear the ship or persons in distress are not in the vicinity and/or other crafts are better placed to assist, superfluous communications which could interfere with search and rescue activities are to be avoided. Details should be recorded in the appropriate logbook.
如果清楚知道遇險船舶或人員不在附近及/或其他船艇更適合前往協助，應避免不必要之通信以干擾搜救行動，該詳情應紀錄於適當日誌簿上。
2. The ship should establish communications with the station controlling the distress as directed and render such assistance as required and appropriate.
船舶應依指示與控制遇險之電臺建立通信，使援助適當地符合需求。
3. Distress relay calls should be initiated manually.
遇險中繼呼叫應以人工啟動。
4. CS=Coast Station RCC=Rescue Co-ordination Center
CS 係指海岸電臺 RCC 係指搜救協調中心