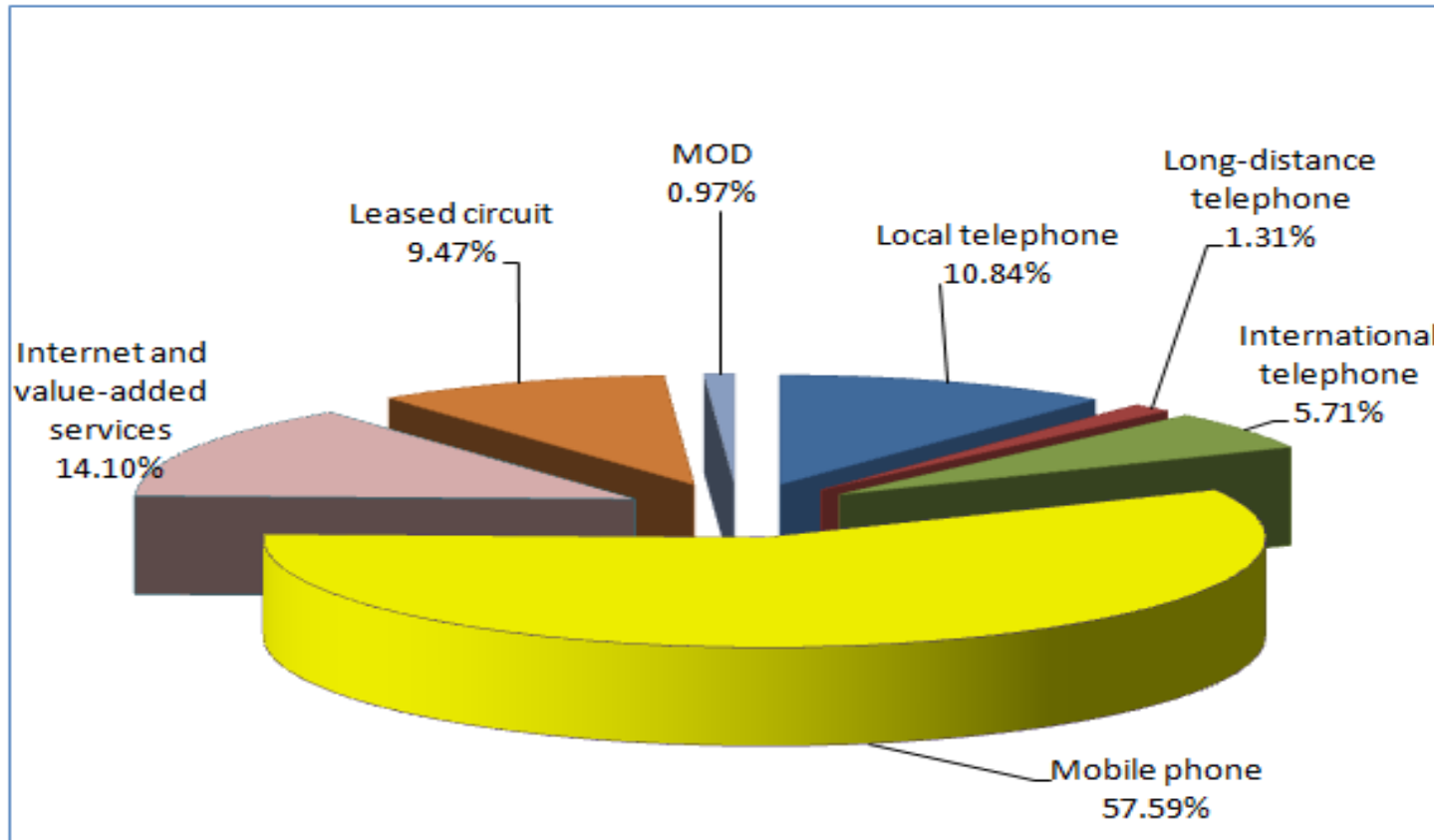


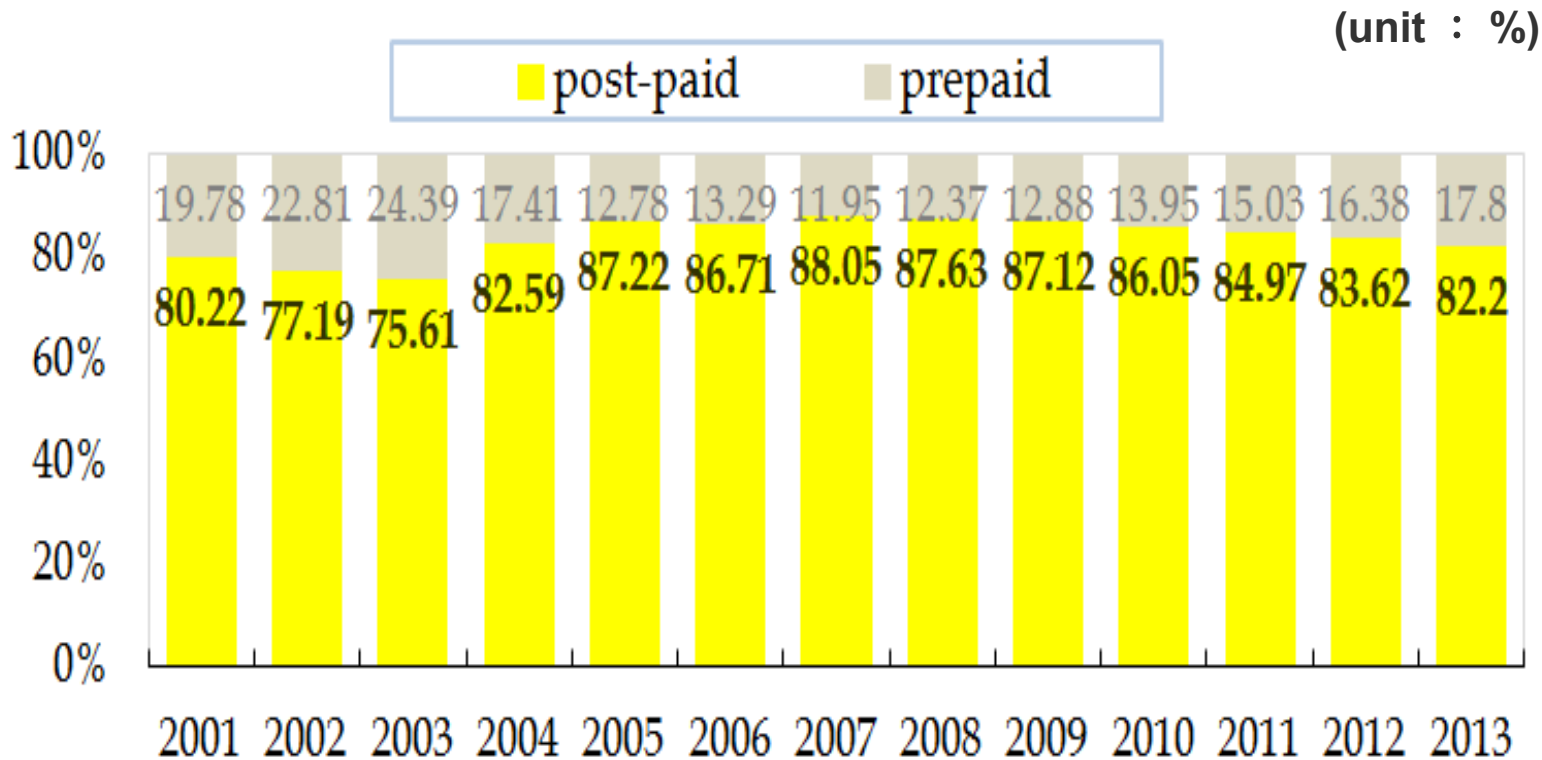
## Distribution of Telecom Revenue by Services in 2013



**Note:** Total revenue of telecom services in 2013 (NTD 377 billion) showed an increase of 114% in comparison with revenue in 1997 (NTD 176.2billion)

**Source:** National Communications Commission

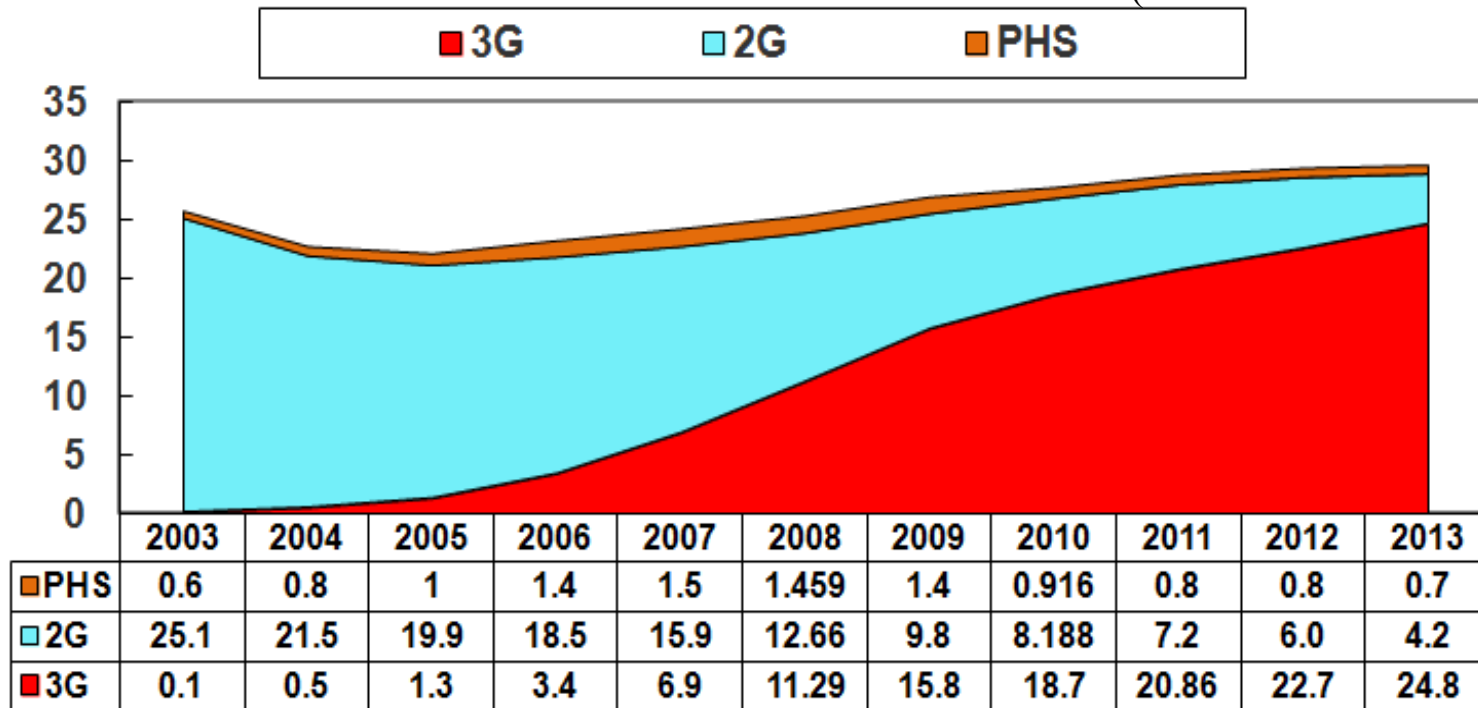
## Mobile Market - Proportion of Prepaid Card Subscribers



Source: National Communications Commission

## Evolution of Mobile Market

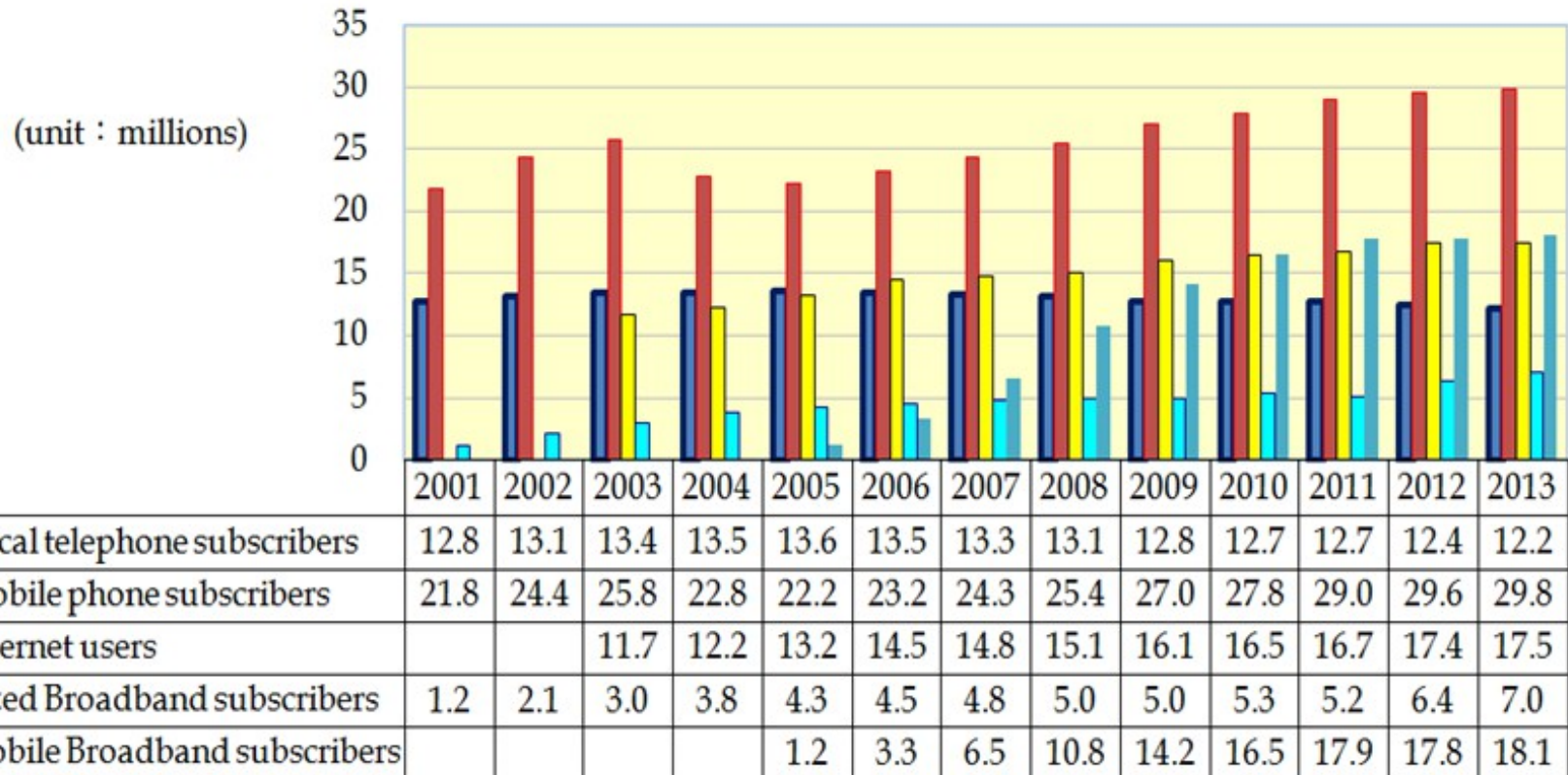
(unit: Millions of subs)



**Note:** The first 3G operator launched its service in July 2003 - four other operators began in 2005 (between July and Dec.)

**Source:** National Communications Commission

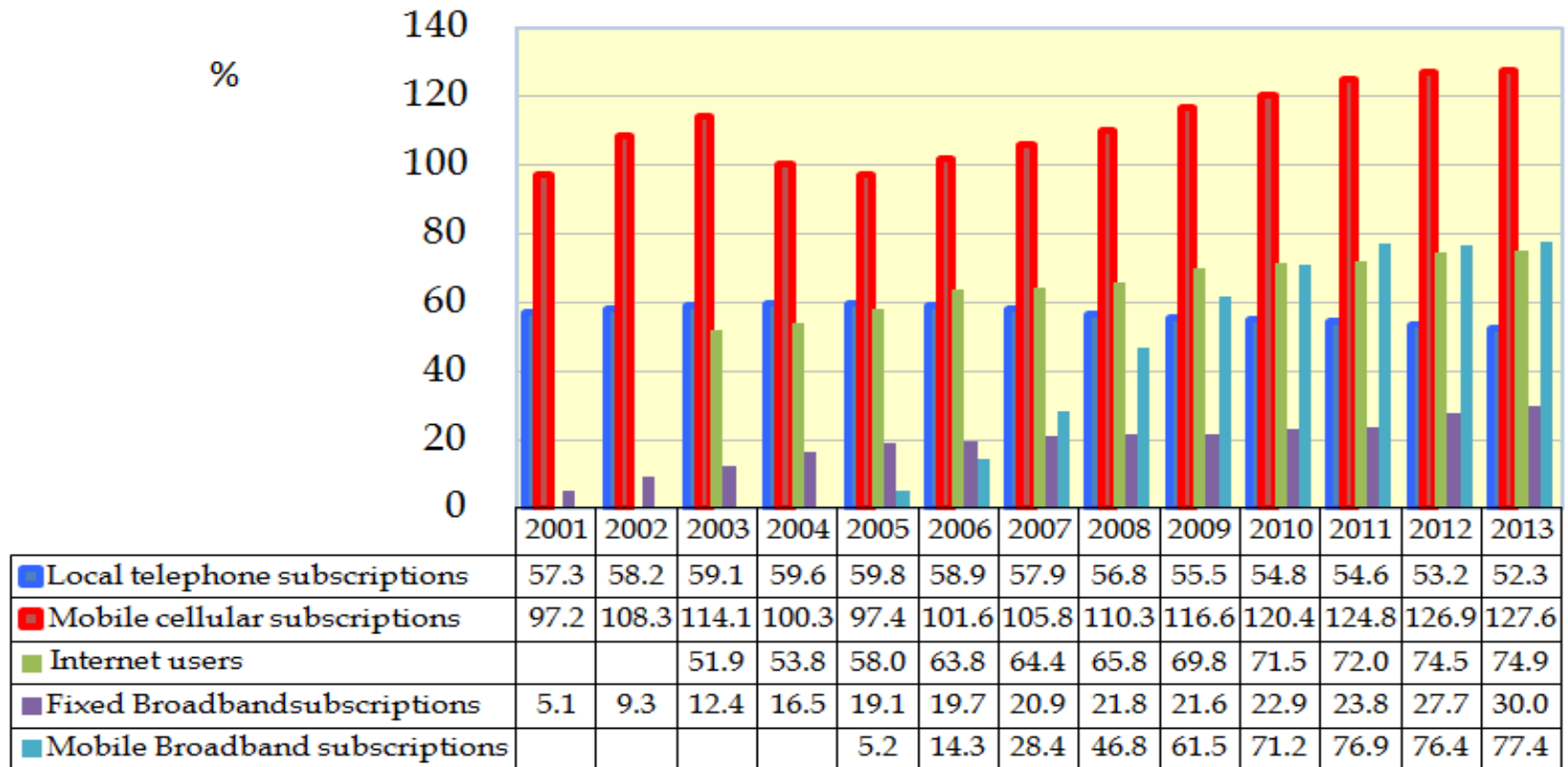
# Number of Telecom Subscribers by Services



## Notes:

1. "Internet users" refers to individuals who accessed the internet during the year (figures are released by IIT-FIND)
  2. "Fixed Broadband subscribers" refers to subscribers of ADSL, FTTx, Cable Modem, Leased Line, PWLAN
  3. "Mobile Broadband subscribers" refers to subscribers of 3G who can access the internet, WBA
- Source: National Communications Commission

# Telecom Services Subscribers per 100 inhabitants

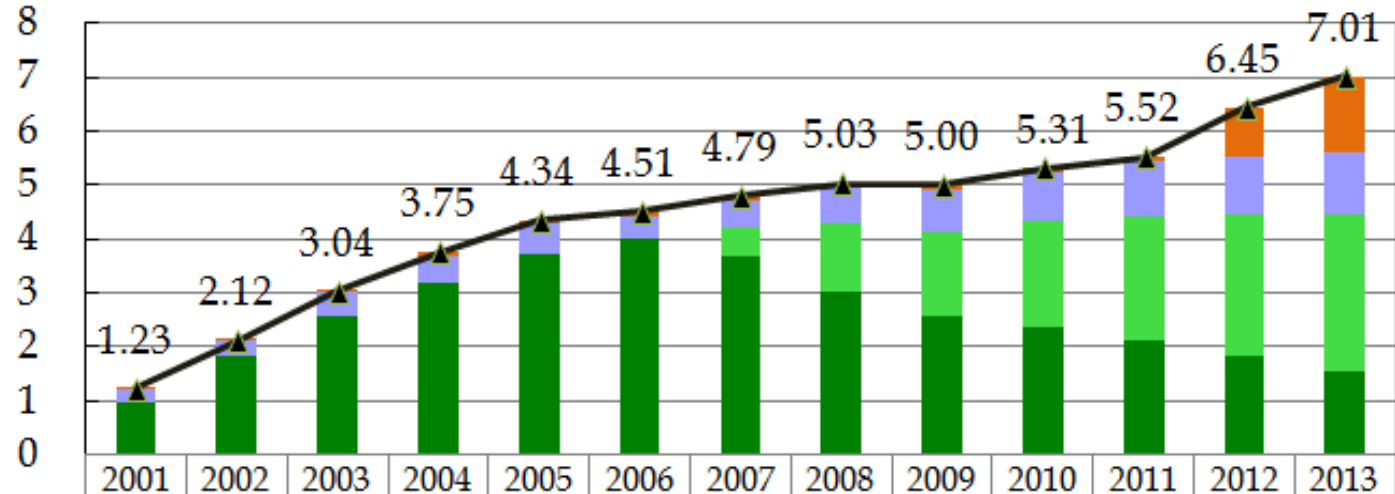


## Notes:

1. "Internet users" refers to individuals who accessed the internet during the year (figures are released by III-FIND)
  2. "Fixed Broadband subscribers" refers to subscribers of ADSL, FTTx, Cable Modem, Leased Line , PWLAN
  3. "Mobile Broadband subscribers" refers to subscribers of 3G who can access the internet, WBA
- Source: National Communications Commission

# Analysis of Fixed Broadband Subscribers -by Technologies

Million Subs

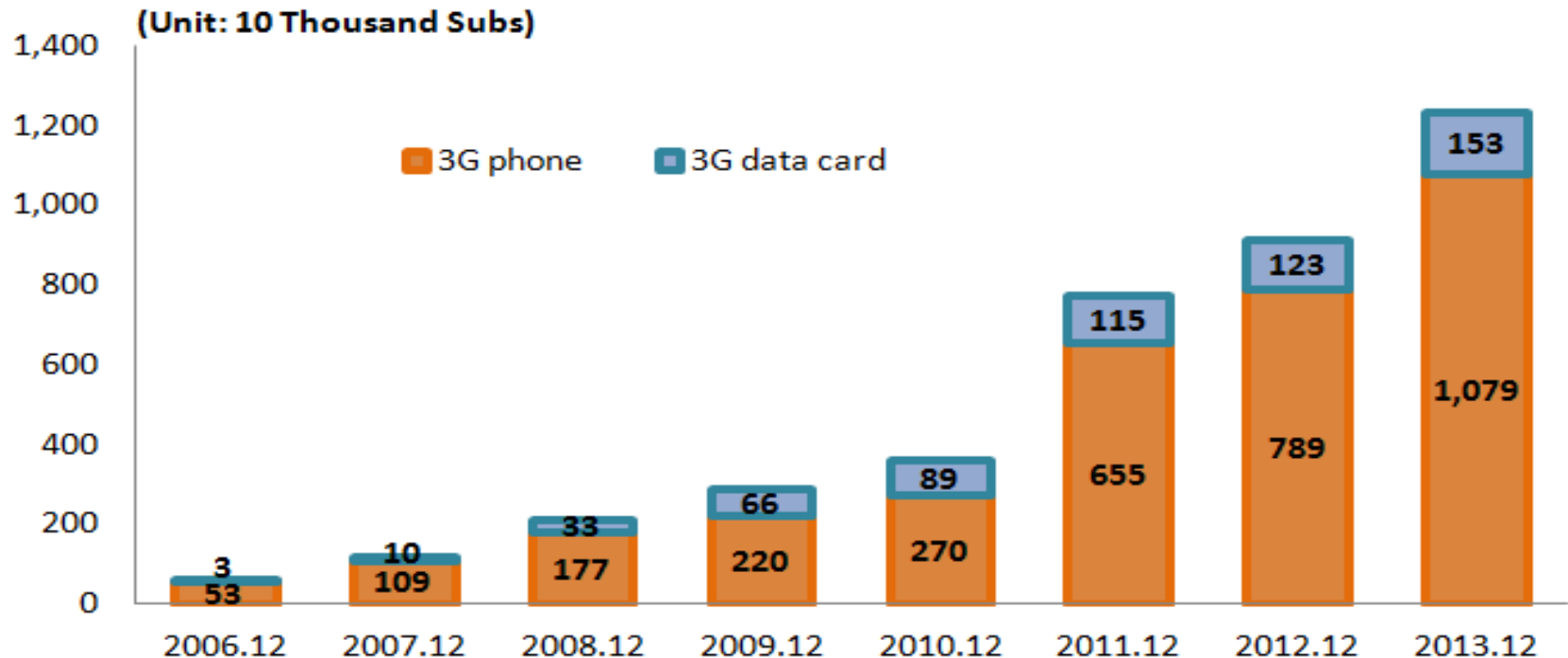


	2001	2002	2003	2004	2005	2006	2007	2008	2009	2010	2011	2012	2013
others	0.03	0.02	0.04	0.06	0.06	0.08	0.08	0.09	0.07	0.07	0.08	0.91	1.41
Cable Modem	0.23	0.28	0.45	0.53	0.54	0.42	0.50	0.65	0.81	0.93	1.01	1.08	1.15
FTTx							0.55	1.26	1.53	1.96	2.30	2.63	2.90
ADSL	0.97	1.82	2.55	3.17	3.74	4.00	3.66	3.03	2.58	2.36	2.12	1.82	1.55
▲ Total	1.23	2.12	3.04	3.75	4.34	4.51	4.79	5.03	5.00	5.31	5.52	6.45	7.01

Note: “others” include the subscribers of PWLAN, Leased Line.

Source: National Communications Commission

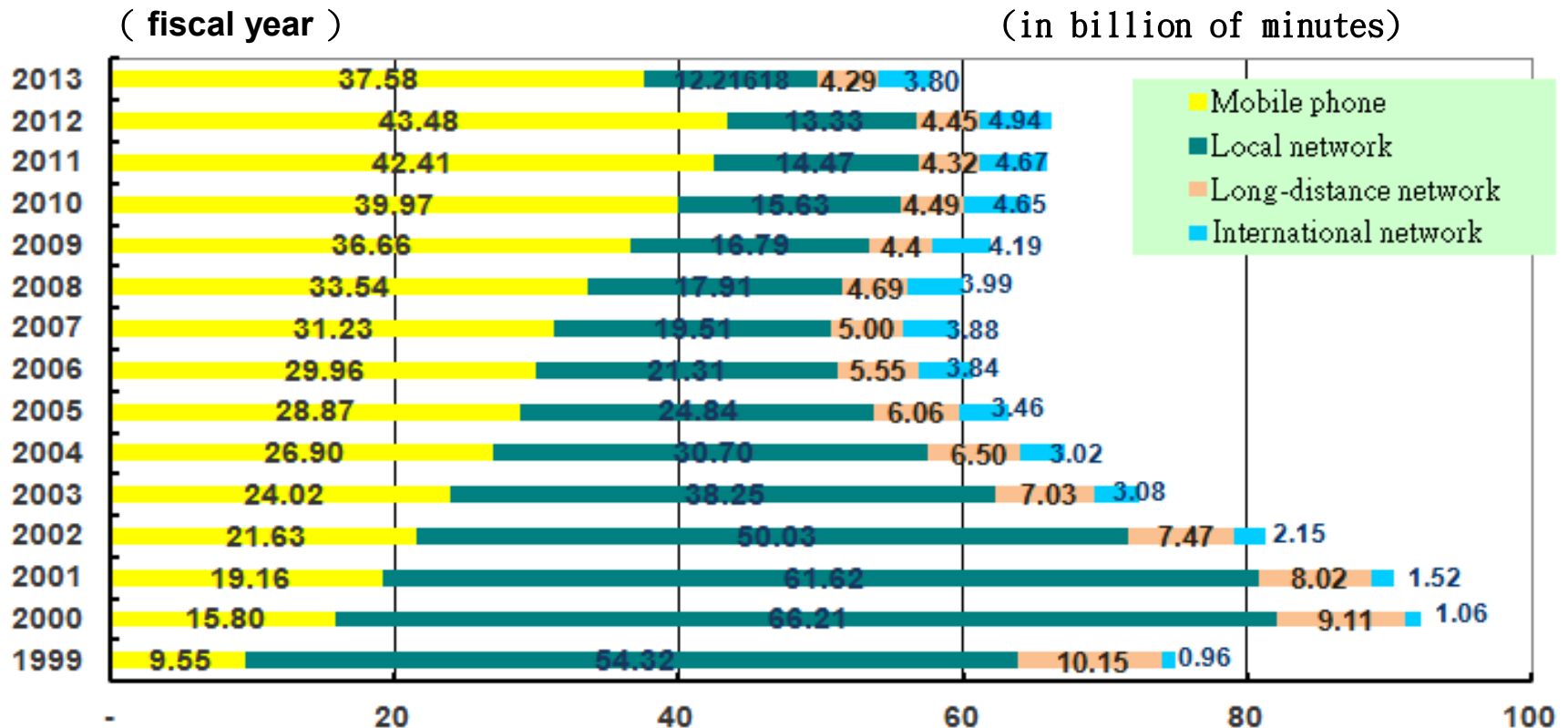
## Internet access via 3G mobile networks



**Note:** The figures are for December of the stated year.

**Source:** National Communications Commission

# Mobile voice volume has overtaken fixed since 2007



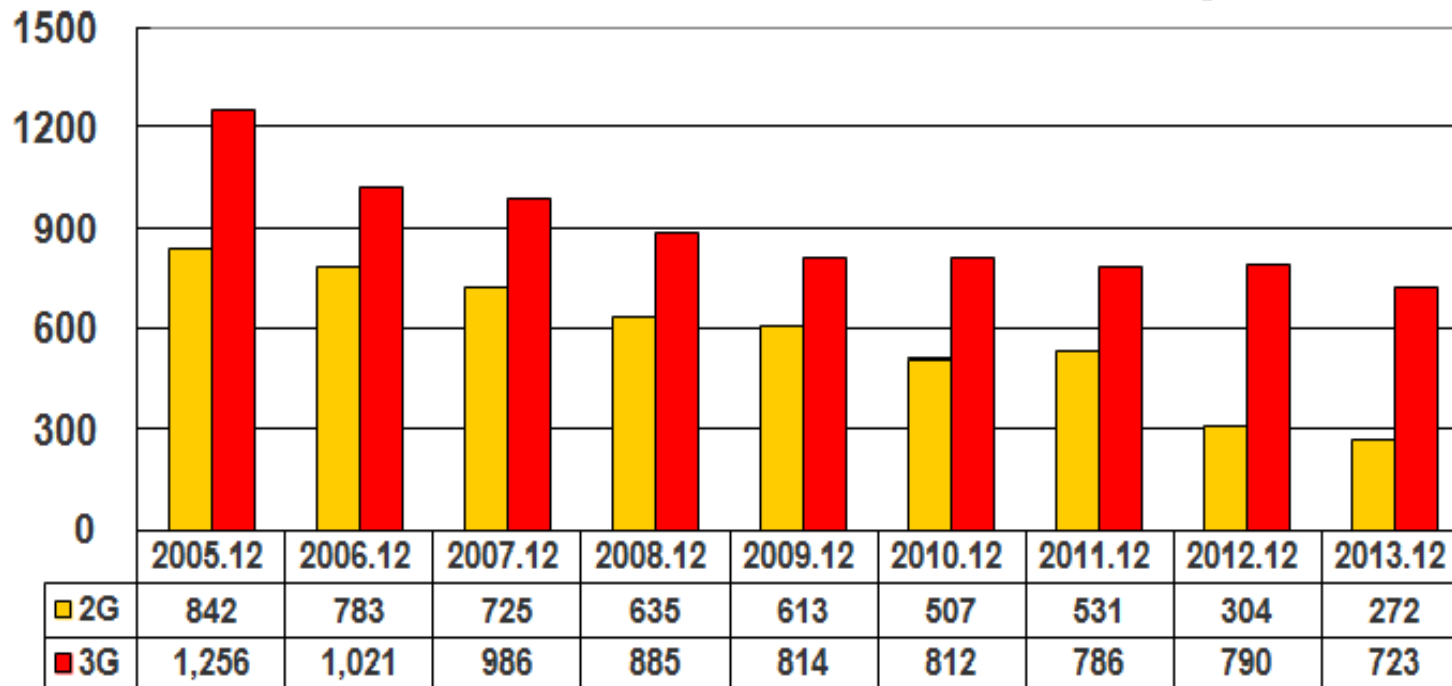
Note: Fixed Communications include the voice volume of local network, long-distance network, and international network

Source: National Communications Commission



# Average Revenue Per User ( ARPU ) of Mobile Services

(NTD per month)

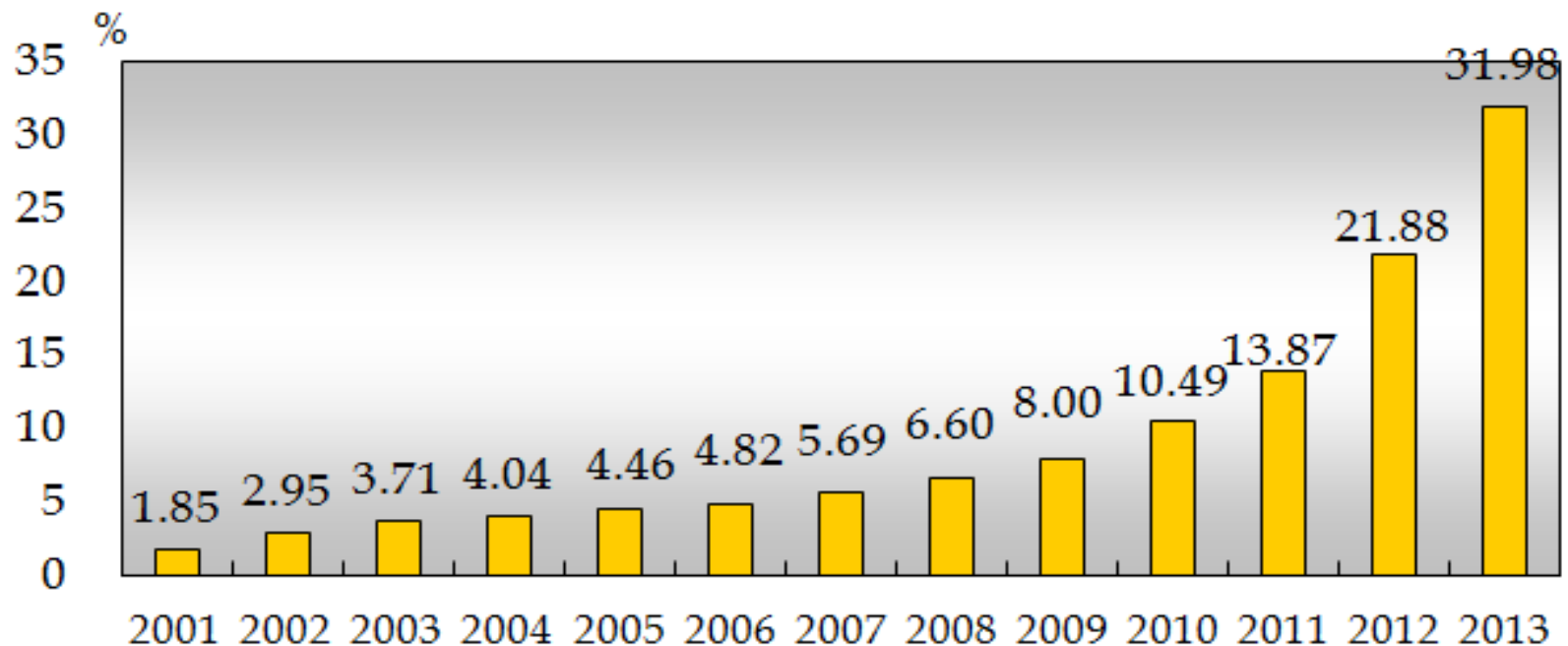


## Notes:

1. ARPU of mobile phone refers to total amount of mobile phone revenue per month divided by the number of mobile phone subscribers
2. Figures cover only the data of mobile operators who provide both 2G and 3G services

Source: National Communications Commission

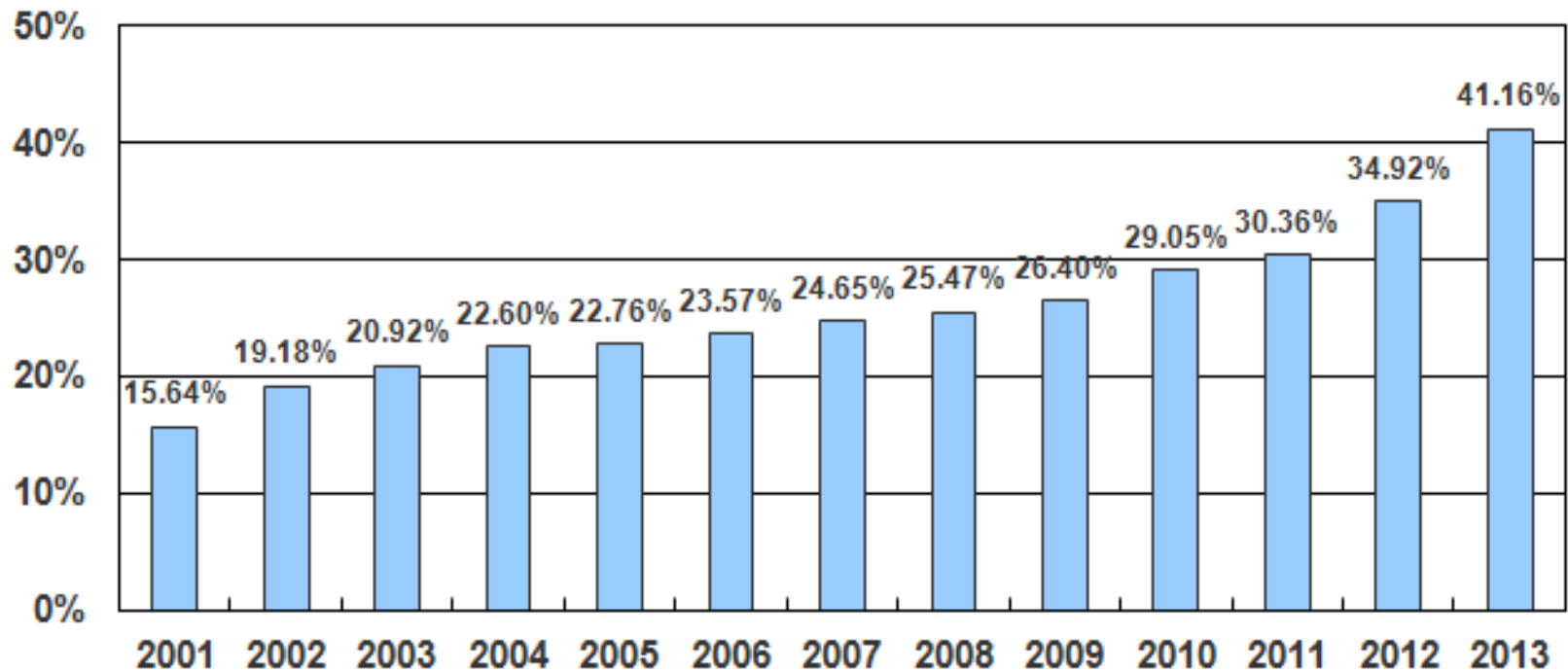
## Mobile Data Service Revenue - as proportion of Total Mobile Revenue



**Note:** Mobile data service revenue includes revenue of WAP, GPRS, SMS and other data communication services

**Source:** National Communications Commission

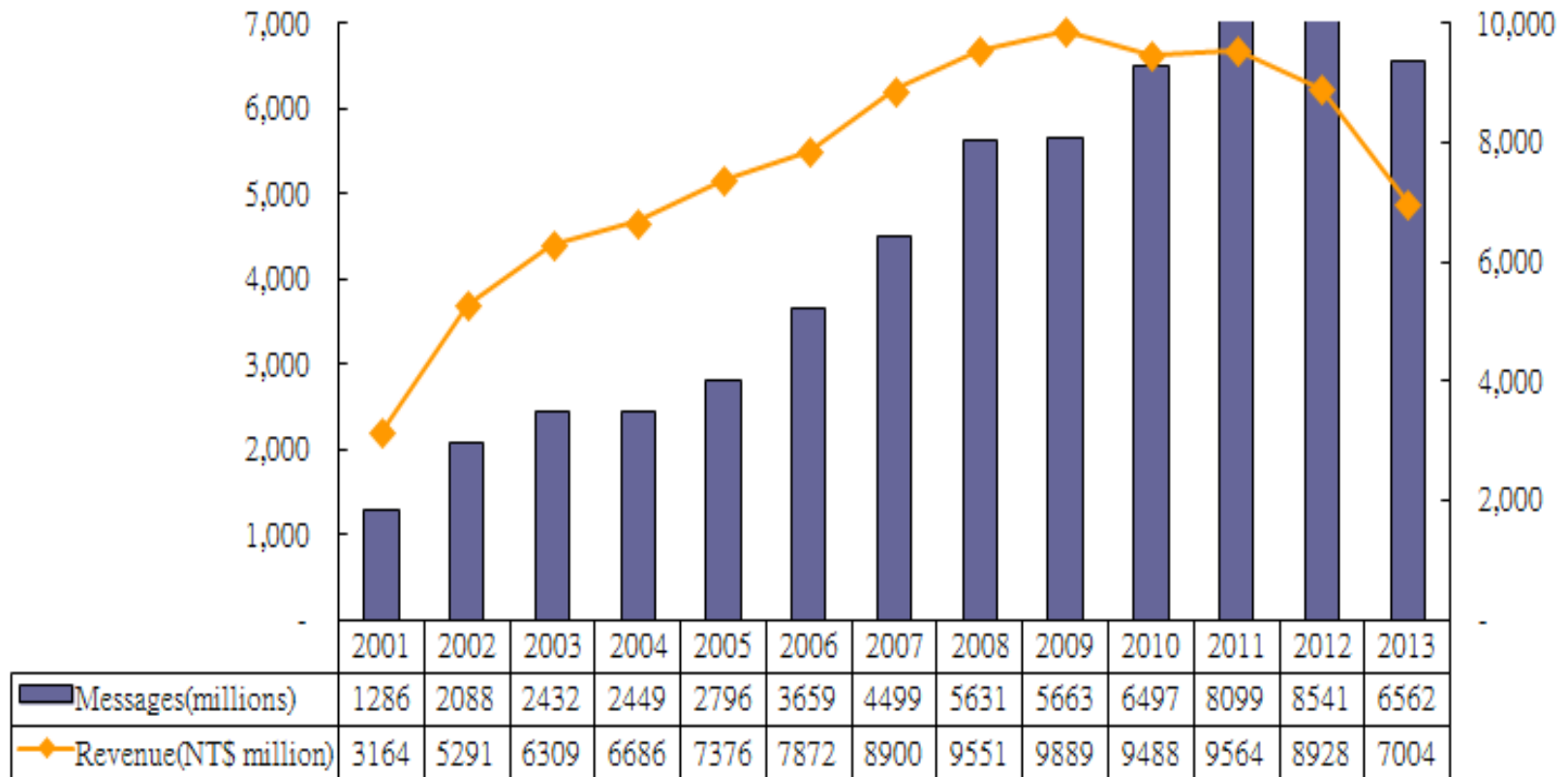
## Data Communication Revenue as proportion of Total Telecom Revenue



**Note:** The items of data communication revenue include revenue of mobile data service, internet service, value-added services and leased circuit service

**Source:** National Communications Commission

## SMS ( Short Message Service ) Volume and Revenue



Source: National Communications Commission